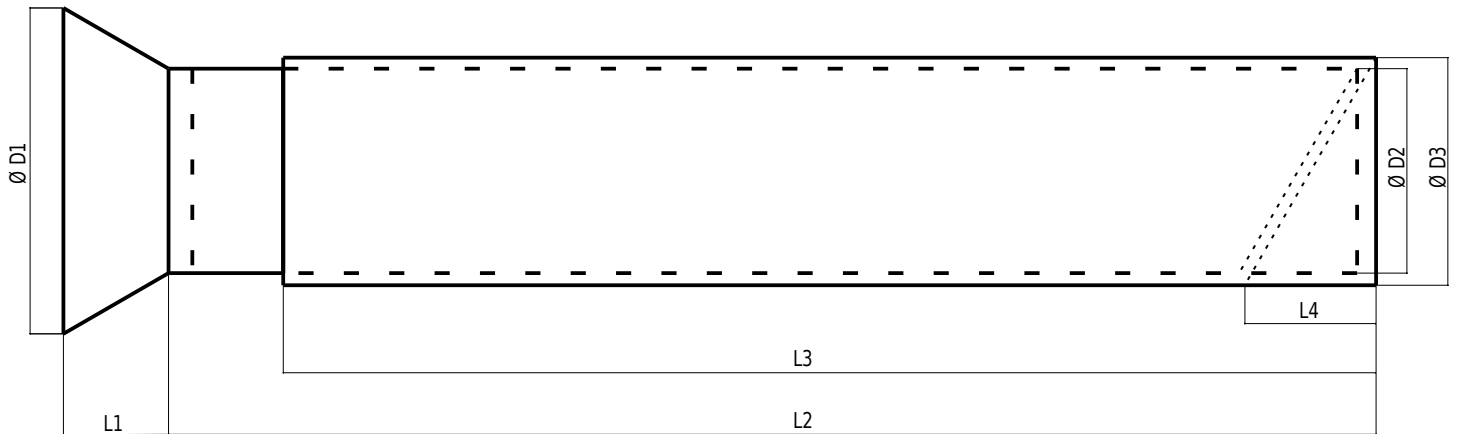


### Exhausts

- double-walled stainless steel tailpipe
- lightweight construction
- material of the inner exhaust pipe stainless steel AISI 301 0,15 mm
- outer casing - aluminium Al alloy 0,2 mm
- the layer between the exhausts is filled with a ridge made of 0.15 mm stainless steel sheet
- measurement and production according to your crashed exhausts



### Notes:

$\varnothing D2$	-56 mm	L2 =		
	-70 mm		L3 =	
	-86 mm		L4 =	
	-100 mm			

$\varnothing D3$  (normal  $\varnothing D2 + 9$  mm) =

**D1** and **L1** values are specified by the manufacturer for the specific selected diameter **D2**